

IMRC2020

ACCOMODATIONS



The official Hotel for the 2020 International Mines Rescue Contest is [The Resort at Glade Springs](#). We strongly recommend for teams to stay at this Resort to facilitate airport transportation, transportation to and from events, and scheduling. Block room rates have been negotiated and are available by calling 1-877-814-7316. **Please refer to the room block as:**

IMRC 2020

The Block Room Rate is: \$200 per night for single or double occupancy. Several types of room accommodations are available at the resort (see room layouts).

Room rate includes:

- Daily Hot Breakfast Buffet
- Free Wi-Fi
- Shuttle Service to/from the Beckley-Raleigh County Memorial Airport (BKW)
- Daily Shuttle Service to and from the Mine Academy and High Angle Rope Rescue Venue (Beckley Fire Department)
- State Tax (6%)
- Hotel Tax (6%)
- Resort Fee is Waived

Shuttle Service for Pick-Up or Drop Off at the Yeager Airport in Charleston, WV is available for \$75 Per Person.

There are several restaurants and activities available at the resort. Visit The Resort at Glade Spring website for more information.

Teams lodging at the Glade Springs Resort will be transported to and from the Beckley-Raleigh County Memorial Airport, the event sites, and back to the resort each day by Glade Springs Resort Buses. Arrangements can be made by the team(s) for the Resort Buses to transport them to other local area attractions (additional fees).

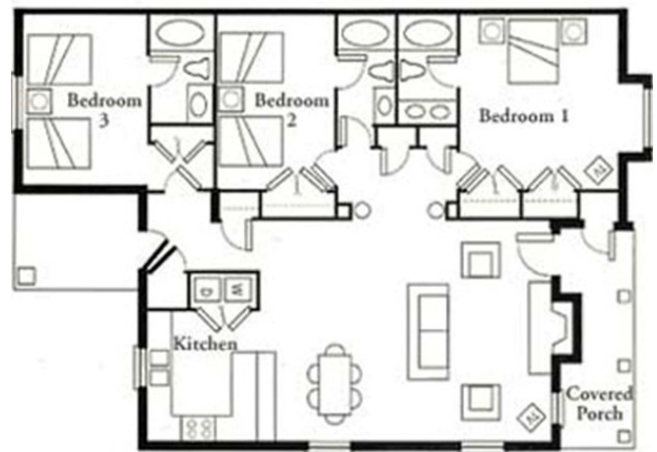
Important: Teams not staying at the Resort will be responsible for their own airport transportation, and transportation to and from event sites.



Oak Lane Villa - 3 Bedrooms

The Oak Lane Villa features a living area with fireplace, fully equipped kitchen, and a screened porch with washer & dryer included.

The 3 bedroom villa can sleep 12; it has 1 king size bed, 4 double beds, and 1 pullout sleep sofa. Each bedroom has an adjoining bath.

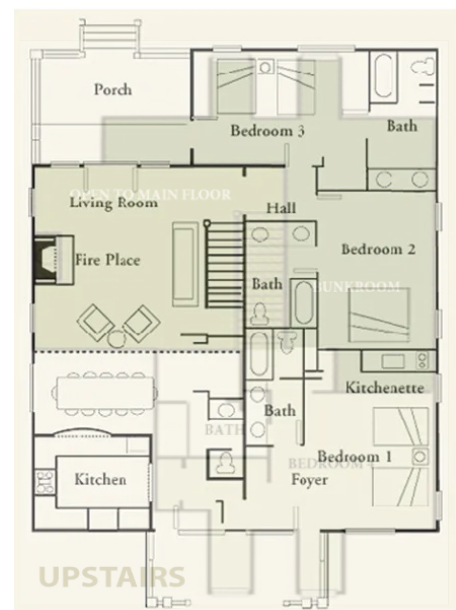




Chestnut Hill Lodge - 4 Bedrooms

The Chestnut Hill Lodge features 4 bedrooms, 4.5 baths, a fully-equipped kitchen, and living area with vaulted ceiling and pullout sleep sofa.

The 4 bedroom lodge can sleep 22; there is 1 king bedroom, 2 rooms with 2 queen beds on the ground level and 1 bedroom with 2 queen beds plus a loft upstairs with several bunkbeds.

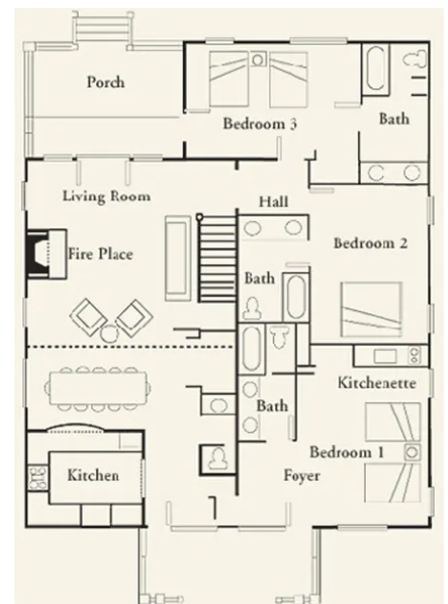




Chestnut Hill Lodge - 6 Bedrooms

This Chestnut Hill Lodge features 6 bedrooms, 6.5 baths, a fully-equipped kitchen, and living area with vaulted ceiling, fireplace, and pullout sleep sofa.

The 3 story, 6 bedroom lodge can sleep 32; there is 1 king bedroom and 1 room with 2 queen beds on the ground level, 1 room with a king bed and sofa bed on the lower floor, and 1 bedroom with 2 queen beds plus a loft upstairs with several bunkbeds.





Manor House - 4 Bedrooms

Each floor of the 2 story Manor House features a shared living area and kitchen.

The Manor House can sleep 18 per floor; there are 4 bedrooms on the floor, each with a private bathroom and private outside entrance.

